

Aegis

10KVA ~ 120KVA
PF 0.9 (3 : 3)



Applications

IDC-Internet Data Center
SCADA monitoring system
Laboratory Precision instruments
Electricity & Railway signaling system
Network & Telecommunication facilities
Precision instruments, Automation system

Highlights

- ✓ Modular design
- ✓ Dual input
- ✓ High efficiency
- ✓ High reliability
- ✓ Digitized charger
- ✓ Multiple communication ports
- ✓ Powerful background software
- ✓ Share battery pack in parallel operation
- ✓ Built-in isolation transformer (Optional)

Aegis series UPS is the high density version of three phase on-line double-conversion UPS offers high levels of reliability and protection for IT systems, telecommunication equipment and mission critical systems like small data centers, large retail stores and regional offices. Its modularized design of subsystem, dual-mains input and standard maintenance bypass make maintenance easier on site, and high overall efficiency ensures low power consumption. Moreover for increased availability, scalable runtime is available with flexible built-in/external batteries. Meanwhile optional built-in isolation transformer makes the whole system more reliable.

Features

High reliability

- Advanced DSP digital control technology
- True On-line double conversion technology with strong carrying capacity
- Modular design with high reliability and easy to maintenance
- Effective software and hardware protection function, robust self-diagnostic function and abundant historical log for future check
- Three-level password control technology, including the power-on password, user password and maintenance password control
- Advanced digital parallel redundant configuration (up to 6 units) for power system not only greatly improve system reliability, reduce MTTR, but also allows users to multiply capacity and uptime for future expansion by adding additional UPS systems

High availability

- Dual input distribution makes system availability higher
- Wide input voltage range, self-adaptive 50Hz /60 Hz grid system, suitable for various grid environments
- Linear derating in low voltage input, reducing battery discharging times, extending the service life of battery
- Input power factor closes to 1, harmonic distortion of current is very low, and output power factor 0.9 enable UPS to deliver more power and increase the load capacity
- Frequency conversion mode: 50Hz input / 60Hz output or 60Hz input / 50Hz output
- Users can choose share battery pack to save cost or separate battery pack for different UPS with longer automation time
- Battery cold start and mains restoration auto-restart are available
- Optional built-in output isolation transformer meets customer's special requirement on electric isolation on UPS output

High usability

- 5.7 inches LCD touch screen, multi-functional keys operation, friendly human-machine interface
- Robust background software for parameters configuration, online updating
- Compact internal layout, miniaturized the complete unit for small footprint
- Standard Emergency Power Off (EPO)

High intelligence

- Advanced multi-platform communications: standard RS232 / USB / RS485 / dry contacts, optional SNMP communication interfaces are used for monitoring UPS running status
- Advanced intelligent battery management technique, digitized charger with flexible charger parameters setting and battery configuration (32 / 34 / 36 / 38 / 40 pcs selectable)
- When the batteries are out of warranty, the system will remind you

Energy conservation and environment protection

- Active power factor correction (APFC), input power factor up to 0.99
- Work efficiency up to 98.5% in ECO mode

Available Options

Communication Ports

SNMP and SMS alarm

Software

UPSmart / iStars

Others

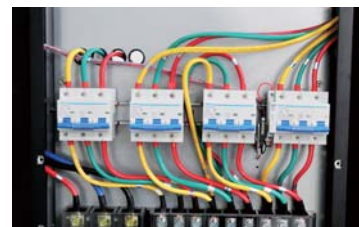
Parallel card

Built-in isolation transformer

Battery temperature compensation

Details

1. SNMP (optional)
2. RS232
3. RS485
4. USB
5. Temp compensation
6. Battery protection
7. Dry contact
8. Parallel port (optional)



Technical specifications

MODEL	AGS 10	AGS 20	AGS 30	AGS 40	AGS 60	AGS 80	AGS 100	AGS 120
Capacity	10 KVA 9 KW	20 KVA 18 KW	30 KVA 27 KW	40 KVA 36 KW	60 KVA 54 KW	80 KVA 72 KW	100 KVA 90 KW	120 KVA 108 KW
INPUT								
Rated voltage	380 V / 400 V / 415 Vac							
Voltage range	204 ~ 242 Vac (load ≤ 50%); 242 ~ 305 Vac (load ≤ 70%); 305 ~ 520 Vac (load ≤ 100%)							
Rated frequency	50 / 60 Hz (auto-sense)							
Frequency range	40 ~ 70 Hz							
Power factor	≥ 0.99							
Total harmonic distortion (THDI)	≤ 3%							
Bypass voltage range	Rated output voltage -40% ~ + 20% (settable via LCD)							
OUTPUT								
Voltage	380 V / 400 V / 415 Vac							
Voltage regulation	± 1%							
Frequency	Battery mode: 50 / 60 Hz; Mains mode: synchronized with utility; Frequency conversion mode: 50 Hz input and 60 Hz output or 60 Hz input and 50 Hz output							
Waveform	Sinusoidal							
Crest factor	3:1							
Total harmonic distortion (THDV)	≤ 1% (linear load); ≤ 5% (non-linear load)							
Transfer time	0 ms							
Inverter overload capability	102% ~ 127%: transfer to bypass in 10 mins; 127% ~ 150%: transfer to bypass in 1 min; > 150%: transfer to bypass in 0.5 s							
Bypass overload capability	≤ 150%: long time running > 150%: shut down in 10 s							
BATTERIES								
DC voltage	± 192 V (options: ±204 V / ±216 V / ±228 V / ±240 V)							
Inbuilt battery of standard model	12 V / 9 Ah × 32	12 V / 9 Ah × 64	Extensible model only					
Charging current	1 ~ 12 A (settable via LCD)		1 ~ 24 A (settable via LCD)			1 ~ 24 A (settable via LCD) 1 ~ 48 A (optional)		
SYSTEM								
Efficiency	≥ 93%; 98.5% in ECO mode							
Display panel	5.7 Inches LCD touch screen							
Alarm	Battery mode, low battery, fans fault etc.							
Max. parallel numbers	6							
EMI	EN62040-2							
EMS	IEC61000-4-2 (ESD) ; IEC61000-4-3 (RS) IEC61000-4-4 (EFT) ; IEC61000-4-5 (surge)							
COMMUNICAITONS								
RS232 / RS485 / USB / dry contacts (standard)	Supports Windows® 98 / 2000 / 2003 / XP / Vista / 2008 / 7 / 8 / 10							
SNMP (optional)	Power management from SNMP manager and web browser							
OTHERS								
Protections	Overload, surge, Short circuit, battery low voltage, battery overcharge, over-temperature							
Humidity	0 ~ 95% RH @ 0 ~ 40°C (non-condensing)							
Noise level	≤ 60 dB							
Dimensions (W × D × H) (mm)	600 × 800 × 1360				600 × 800 × 1680			
Packaged dimensions (W × D × H) (mm)	720 × 920 × 1500				720 × 920 × 1820			
Net / Gross weight (kg)	180 / 200	186 / 205	188 / 210	227 / 245	231 / 250	316 / 376	354 / 414	
Without inbuilt battery								

* All specifications subject to change without notice.